



# Garden Talk

## Battling Bark Beetles

### Better Plants & Better Advice

Bark Beetle infestations can be of great concern to anyone with Ponderosa Pines, Pinion Pines and any other pine tree growing on their property.

#### Signs of Bark Beetle Problems

Early signs are needles fading from a dark green to a pale green, then to straw, then to a rusty red color. Other outward signs are sap leaking out from holes in the trunk, or fine sawdust showing. The larvae stage of this beetle are the size of a grain of rice and the beetles themselves are about one quarter inch long.

#### Stressed Trees Attract More Beetles

There are many contributing factors to beetle infestation. When a Pine tree is stressed it lets off a turpentine odor that attracts more Bark Beetles. The triggers for tree stress are drought, damaged roots due to construction, lightning damage and a property that is overgrown.

#### Keeping Trees Healthy

The number one prevention is deep watering of the tree. It is recommended to water native trees once a month to a depth of 24 inches. A yearly feeding of a granular plant food such as **Fertilome Tree and Shrub Food** is beneficial.

Beneficial sprays can also be administered to the trunk of Pine trees that protect against Bark Beetle boring. Products like **Ferti-lome Carbaryl** or **Hi-Yield**

**Permethrin** works well to protect the trunk from being attracted by Bark Beetles.

#### Trees in Trouble

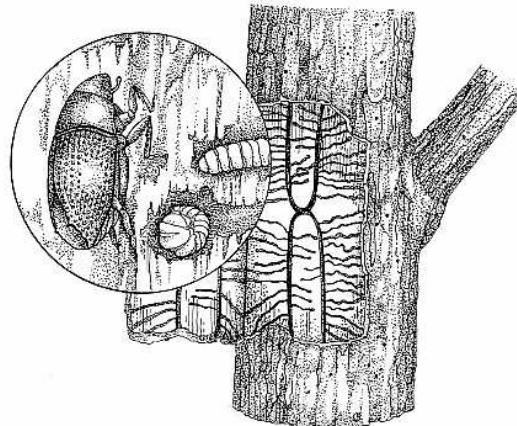
You stand the best chance of bringing back a damaged tree by increasing the trees health and then seeding an insecticide through the tree. Remember any tree can pass a point of no return.

If your trees seem to be suffering from light green needles, entry holes in the bark, pitch trails, and/or sawdust, do the above regimen of watering and feeding, but also apply an application of **Soil Activator** and **Root**

**Stimulator**. These two products promote strong, vigorous root growth for a more robust tree able to adapt to environmental factors.

#### Remove Dead Trees

Trees that have died should be cut down to reduce fire danger and the risk of a tree falling over. The brush should be chipped or hauled off and the lumber cut and split,



Thinning of trees is a good long-term preventative measure. Remember to protect your trees,  
1) Deep, monthly irrigation; 2) Apply a quality tree and shrub food 2) Application of insecticide; 3) Thinning trees as necessary.

[wattersonline.com](http://wattersonline.com)

Iron Springs Road, Prescott, AZ 86305

**Better Plants & Better Advice**

